

## PROJECT SCHEDULE AND COST

Project Phase	Year*	Cost*
Design	On-Going	--
Construction and Construction Engineering & Inspection (CEI)	Fall 2026	\$41.42 Million

\*Schedule and Cost are preliminary and subject to change

### ENGAGE WITH US!

FDOT encourages you to participate, whether you utilize the virtual option or attend in-person.

After reviewing the hearing materials, and/or participating, there are multiple ways for you to provide comments to FDOT. These include:

- Providing comments during the public comment period, following the Public Hearing
- Filling out the comment form on the project website at [www.nflroads.com/US17](http://www.nflroads.com/US17).
- Emailing the FDOT Project Manager Michael Brock, at [Michael.Brock@dot.state.fl.us](mailto:Michael.Brock@dot.state.fl.us), or
- Mailing comments to the FDOT District Two Office at 1109 S. Marion Avenue, Lake City, Florida 32025

While comments about the project are accepted at any time, **please note that comments must be received by October 7, 2024, to be included in the formal hearing record.**

Public participation is solicited without regard to race, color, national origin, age, sex, religion, disability, or family status.

The environmental review, consultation, and other actions required by applicable federal environmental laws for this project are being, or have been, carried-out by the Florida Department of Transportation (FDOT) pursuant to 23 U.S.C. § 327 and a Memorandum of Understanding dated May 26, 2022, and executed by the Federal Highway Administration and FDOT.

### FOR MORE INFORMATION

#### Michael Brock, PE, Project Manager

FDOT District Two  
 1109 S. Marion Avenue  
 Lake City, Florida 32025  
 Phone: (386) 961-7707  
 Email: [Michael.Brock@dot.state.fl.us](mailto:Michael.Brock@dot.state.fl.us)  
 Project Website: [www.nflroads.com/US17](http://www.nflroads.com/US17)



# US 17 (SR 5/MAIN STREET) SUBSEQUENT PUBLIC HEARING

Duval County, Florida | Financial Management Number: 209411-8



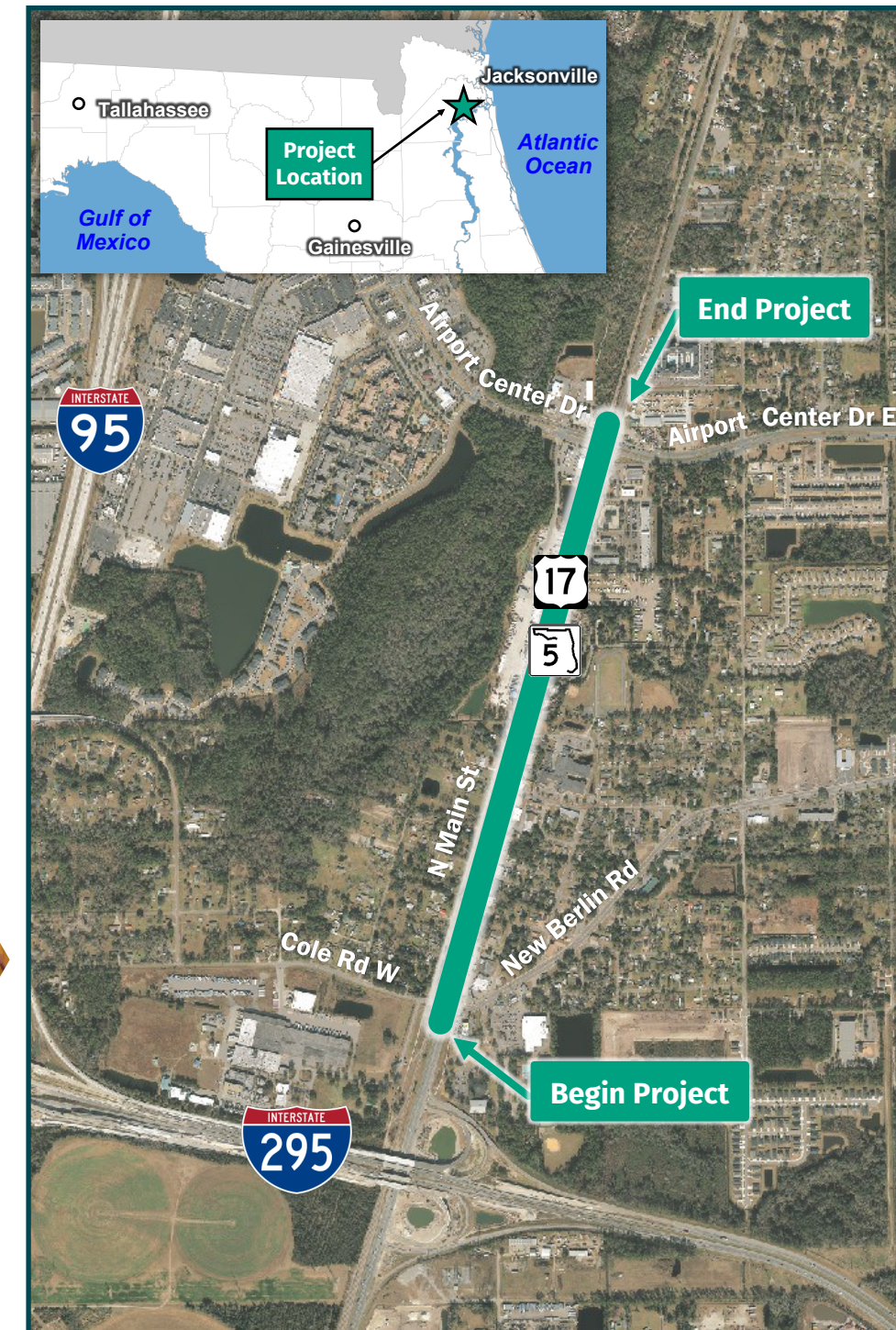
The Florida Department of Transportation (FDOT), District Two welcomes you to the US 17 (SR 5/Main Street) Subsequent Public Hearing to discuss the proposed improvements for US 17 from south of New Berlin Road to Airport Center Drive in Duval County, Florida. The purpose of the Subsequent Public Hearing is to discuss the changes that have taken place to US 17 during the Design Phase and provide an opportunity for the public to express their opinions and concerns regarding the location, conceptual design, and social, economic, and environmental effects of the proposed improvements.

### ABOUT THE PROJECT

US 17, within the project limits, is a two-lane undivided roadway running parallel to the CSX railroad, with intermittent sidewalks and no bicycle facilities.

In 2005, FDOT initiated a Project Development & Environment (PD&E) study to evaluate widening US 17. The purpose of the project was to accommodate current and anticipated traffic demand, enhance safety, and serve existing and future land uses along the US 17 corridor.

In 2007, a Public Hearing was held to present the preferred alternative and gather public feedback. The PD&E study was approved in 2008 and the project is now in the Design phase.



Project Location Map



## ACCESS MANAGEMENT

### What is Access Management?

Access management is the careful planning of the location, design, and type of access to properties, businesses, and homes. This also includes guidelines for median openings and driveway entrances. The goal of access management is to promote the safe and efficient movement of people and goods by reducing potential conflicts on the roadway.

### How does Access Management improve safety?

Access management improves safety by reducing the number of potential conflict points for users of the transportation network, thereby lowering the risk of crashes.

### Questions about Access Management?

If you have concerns about access that affect your property or business, you can appeal to the Committee and request an opportunity to present your concerns in person or in writing by contacting:

### Access Management Review Committee

Attention: Carlos Nieto, PE  
 Florida Department of Transportation  
 2198 Edison Avenue, MS 2815  
 Jacksonville, Florida 32204  
 Telephone: (904) 360-5455 or  
 (800) 207-8236

Email: [CarlosA.Nieto@dot.state.fl.us](mailto:CarlosA.Nieto@dot.state.fl.us)



## PROPOSED PROJECT IMPROVEMENTS

The project proposes widening US 17 from two to four lanes from south of New Berlin Road to Airport Center Drive. Since the previous Public Hearing, conducted in 2007, changes to the proposed typical section have been made. These changes include:

- Reducing the travel lane width from 12 to 11 feet
- Replacing the 46-foot grassed median with a 10-foot center intermittent left-turn lane
- Removing the 4-foot shoulder on both sides
- Installing a barrier wall on the west side of US 17
- Increasing the sidewalk width and filling sidewalk gaps

Additional improvements proposed as part of the project include:

- Implementing a Median U-Turn intersection at US 17 and New Berlin Road/Cole Road West
- Adding an westbound left-turn lane at the intersection of US 17 and Airport Center Drive, making it a double left-turn
- Access management improvements in the form of medians and full/directional openings
- Enhancing side street connections to US 17

## WHAT IS A MEDIAN U-TURN INTERSECTION?

A Median U-Turn (MUT) intersection is an innovative design where vehicles intending to make a left turn first go through the intersection, make a U-turn at a dedicated median opening, followed by a right turn to complete the maneuver.

### What are the benefits of a MUT Intersection?



Improves Safety:

- Reduces the number of conflict points (locations where vehicles cross paths)
- Decreases the potential for right-angle crashes



Increases Efficiency:

- Reduces the number of left-turning movements at the main intersection, allowing for fewer traffic signal phases, which reduces delays and increases capacity



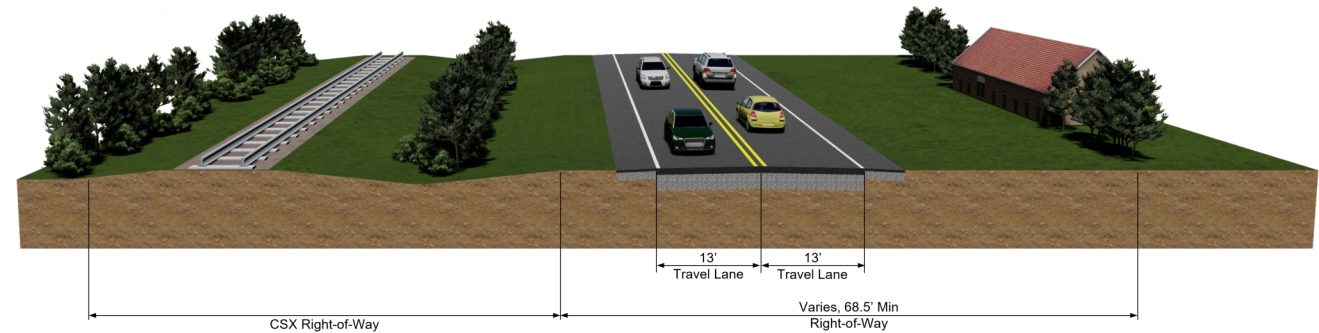
Reduces Wait Times:

- Fewer traffic signal phases means shorter wait times at the main intersection

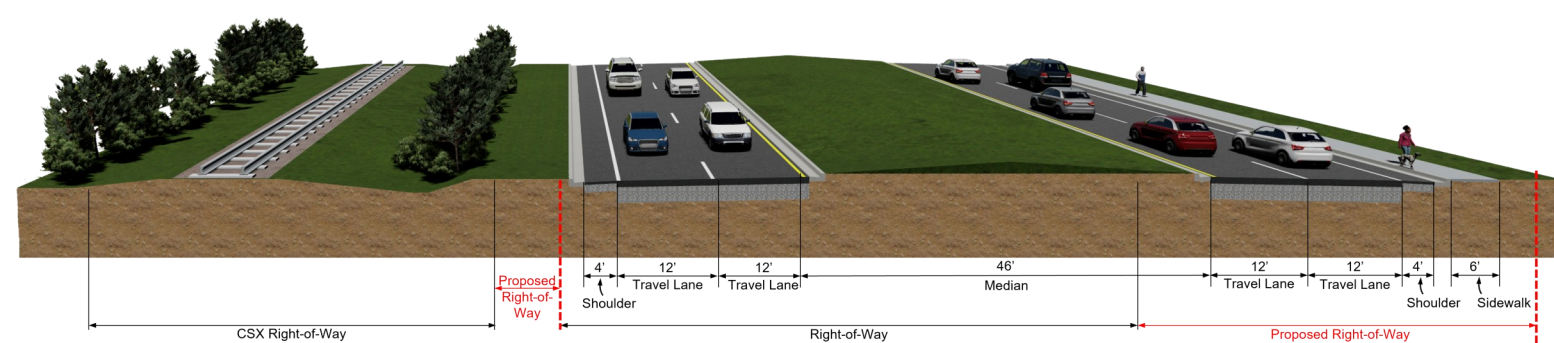


Scan the QR code to learn more about MUT Intersections and how to navigate them.

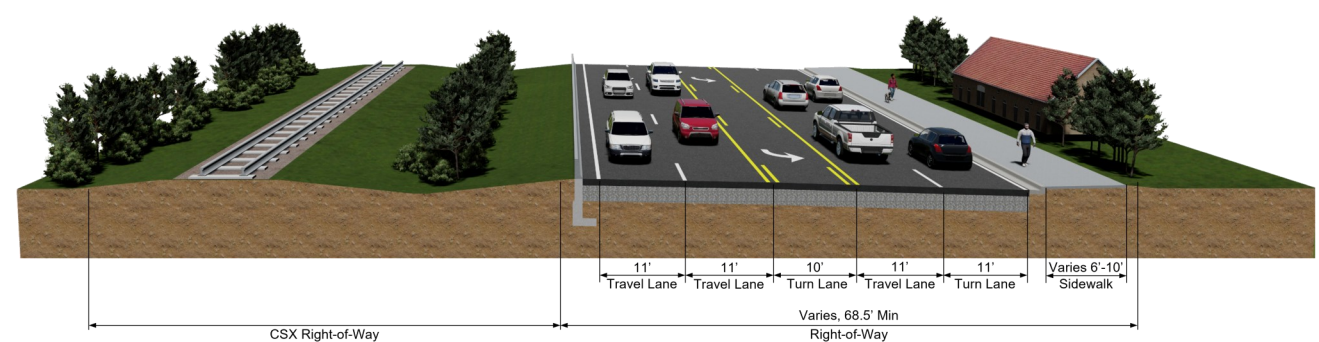
### Existing US 17 Typical Section



### 2008 PD&E Approved US 17 Typical Section



### 2024 Design Proposed US 17 Typical Section



### Median U-Turn Intersection at US 17 and New Berlin Road/Cole Road West

